



# M24 BSA

English Threaded BB  
For M24 Road or MTN Cranks

## SAFETY INFORMATION - READ BEFORE RIDE

Since specific tools and experience are necessary for proper installation, it is recommended that the product be installed by a qualified bicycle technician.

Read the service instructions of your crank carefully prior to installing the parts. Loose, worn or damaged parts may cause riding problems and serious injury may occur as a result. If installation and adjustments are not carried out correctly, the chain may come off and this may cause you to fall off the bicycle which could result in serious injury. **Read these instructions carefully, and keep them for later use.**

- Ensure that your BSA frame shell is clean and free of any debris.
- Apply **Anti-Seize** to the BB cup threads and frame threads before installing.
- Before riding the bicycle, check that there is no play or looseness in the bottom bracket connection. Also, be sure to retighten the crankvarms and pedals at periodic intervals.
- If you feel any looseness or ‘play’ in the bearings, the bottom bracket should be inspected/replaced.
- Be sure to read the instructions for your front chainrings/crank in conjunction with these service instructions.
- **Do not wash the bottom bracket with high-pressure jets of water.**
- For maximum performance it is required to remove and periodically inspect/clean your Praxis Works bottom bracket.
- **Parts are not guaranteed against natural wear or deterioration resulting from normal use.**
- For any questions regarding methods of installation, adjustment, maintenance or operation, please contact a professional bicycle dealer or call Praxis Works.
- Praxis Works assumes no responsibility for damages or injury related to improperly installed components.

READ THE STEP-BY-STEP INSTRUCTIONS THAT ARE PROVIDED ON THE OTHER SIDE.

## WARRANTY

- Praxis Works Bottom Bracket products are warrantied to be free from defects in materials or workmanship for two years after original purchase. The warranty is non-transferable and valid to the original purchaser of the product only.
- Any attempt to modify the product in any way such as drilling, grinding or painting will void the warranty.
- This warranty is not valid for “abused” or neglected products, or products that are damaged by improper installation.
- If a defect is found, our entire liability and your sole remedy shall be, at our option, free repair or replacement of the Praxis product.
- Except as expressly required by law, Praxis Works shall not be held liable for any indirect, special, or consequential damages.

THIS WRITTEN EXPRESS WARRANTY IS IN LIEU OF ALL OTHER WARRANTIES, IMPLIED OR EXPRESSED. This warranty gives you specific legal rights, and you may also have other rights which vary state to state. **For more information on warranty policy and instructions for completing a warranty claim, check out the Full Warranty Policy found at our website. [www.praxis-works.com](http://www.praxis-works.com)**

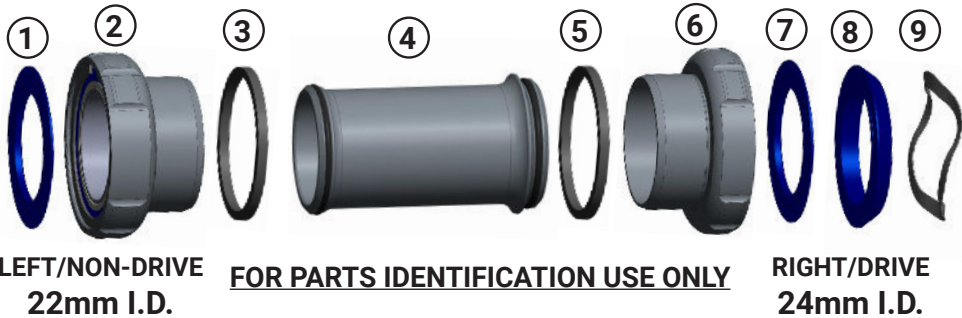
## M24 BSA | Compatibility and Spec

CRANKSET	Compatible with ALL Praxis M24 (steel spindle) Cranks and SRAM GXP cranks
FRAME SHELL	BSA 68mm Road Frames   BSA 68/73mm MTB Frames
FRONT DERAILLEUR	Braze-on, ST Clamp, or Direct Mount - E-type only when on 68mm MTB

### REQUIRED TOOLS

- Any standard BB tool for 16-notch 44mm outboard BB cups
- 3/8” Drive Torque Wrench
- Anti-Seize Compound
- Waterproof Grease

Number	INCLUDED PARTS BELOW	Qty
1.	22mm ID X 1.7mm Dust Cover (Stepped Cover)	1
2.	Non-Drive Side (L) Cup 22mm ID Bearing	1
3.	BB Cup Spacer for 68mm MTN <b>ONLY</b>	1
4.	Moisture Seal	1
5.	BB Cup Spacer for 68mm MTN <b>ONLY</b>	1
6.	Drive Side (R) Cup 24mm ID Bearing	1
7.	24mm ID X 2mm Dust Cover	1
8.	24mm ID X 3.7mm Dust Cover	1
9.	Wave Washer	1



# TOOLS REQUIRED



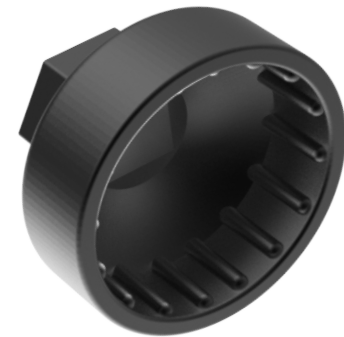
**SOCKET  
WRENCH**



**TORQUE  
WRENCH**



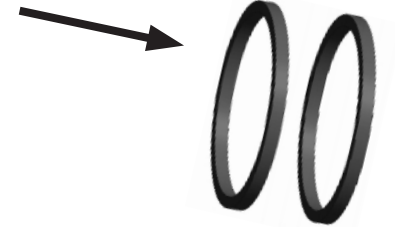
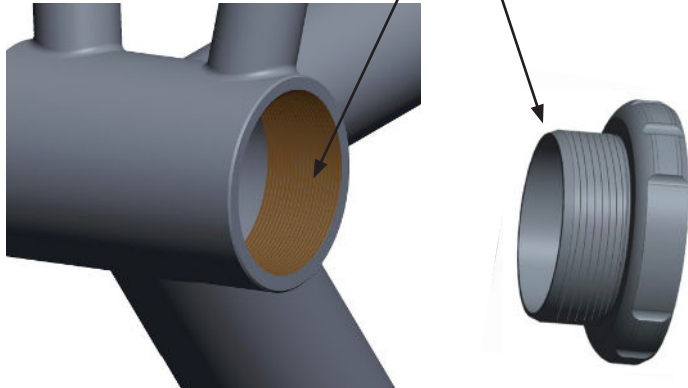
**16-NOTCH BB TOOL**



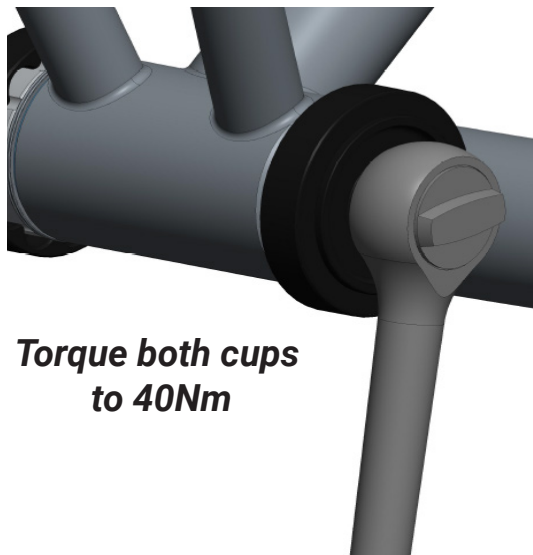
# BOTTOM BRACKET INSTALLATION

**VIP:** The 2 Cup Spacers included are **ONLY** used for MTN bike cranks on **68mm** wide frames!

BB Cup and Frame Prep



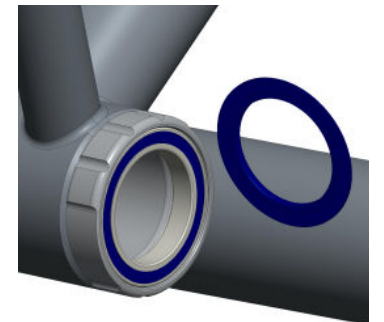
1. Apply grease or anti-seize to the frame & BB cup threads
2. Locate, read and follow the directional arrows on the cups
3. Thread the Right/Drive cup into the frame's Right/Drive side
4. Thread the Left/Non-Drive cup with the attached moisture seal into the frame's Left/Non-Drive side
5. Finish by tightening both cups to 40Nm of torque
6. See next page to find correct Dust Covers for your crank. Lightly grease underside of Dust Covers and place them over bearings **with Praxis logos facing outward**. Now you can install the crank



Torque both cups to 40Nm

**\* CRANK INSTALLATION \***

Please see CRANK instructions at [www.praxiscycles.com/manuals](http://www.praxiscycles.com/manuals)



# BB DUST COVER SETUP

*Use ONLY 1 Dust Cover per side!*  
*Wave Washer goes on the RIGHT/DRIVE side!*

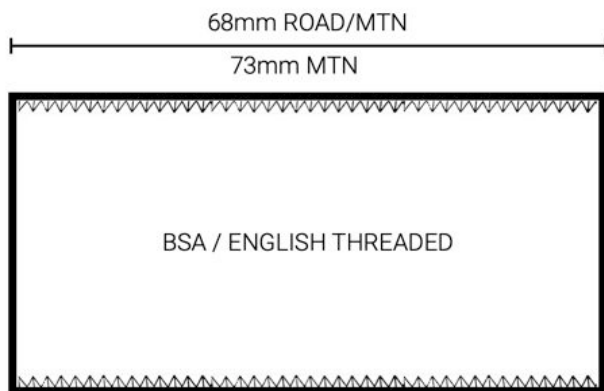
**LEFT/NON-DRIVE  
22mm I.D.**

*(Stepped Cover)*

**RIGHT/DRIVE  
24mm I.D.**

**RIGHT/DRIVE  
Wave Washer**

**NEXT PAGE FOR  
M24 DUST COVER GUIDE**



**REFERENCE - FRAME BB SPECS**

# BB DUST COVER GUIDE

ROAD M24	WIDTH	M24 CRANK	LEFT 22MM COVER	LEFT CUP SPACER	RIGHT CUP SPACER	RIGHT 24MM COVER
* BSA	68	ROAD DM	1.7mm	-	-	2mm
		ROAD NON-DM	1.7mm	-	-	2mm
		SRAM ROAD GxP	1.7mm			2mm
T47 E.B.	68	ROAD DM	1.7mm	-	-	1mm
		ROAD NON-DM	1.7mm	-	-	1mm
		SRAM ROAD GxP	1.7mm			1mm
T47 I.B.	85.5	ROAD DM	1.7mm	-	-	1mm
		ROAD NON-DM	1.7mm	-	-	1mm
		SRAM ROAD GxP	1.7mm			1mm
BB86	86.5	ROAD DM	1.7mm	-	-	2mm
		ROAD NON-DM	1.7mm	-	-	2mm
		SRAM ROAD GxP	1.7mm			2mm
BB30/PF30	68	ROAD DM	1.7mm	-	-	2mm
		ROAD NON-DM	1.7mm	-	-	2mm
		SRAM ROAD GxP	1.7mm	-	-	2mm

"DM" = DIRECT MOUNT SPIDER (Removable Spider)

"NON-DM" = NOT DIRECT MOUNT SPIDER (Pressed-On Spider)

MTN M24	WIDTH	M24 CRANK	LEFT 22MM COVER	LEFT CUP SPACER	RIGHT CUP SPACER	RIGHT 24MM COVER
* BSA	68	GEN1 MTN DM	1.7mm	2.5	2.5	2mm
		GEN1 MTN NON-DM	1.7mm	2.5	2.5	3.7mm
		GEN2 MTN DM	1.7mm	2.5	2.5	3.7mm
		SRAM MTN GxP	1.7mm	2.5	2.5	3.7mm
	73	GEN1 MTN DM	1.7mm	-	-	2mm
		GEN1 MTN NON-DM	1.7mm	-	-	3.7mm
		GEN2 MTN DM	1.7mm	-	-	3.7mm
		SRAM MTN GxP	1.7mm	-	-	3.7mm
	73	GEN1 MTN DM	1.7mm	-	-	1mm
		GEN1 MTN NON-DM	1.7mm	-	-	3.7mm
		GEN2 MTN DM	1.7mm	-	-	3.7mm
		SRAM MTN GxP	1.7mm	-	-	3.7mm
T47 I.B.	89.5	GEN1 MTN DM	1.7mm	-	-	2mm
		GEN1 MTN NON-DM	1.7mm	-	-	3.7mm
		GEN2 MTN DM	1.7mm	-	-	3.7mm
		SRAM MTN GxP	1.7mm	-	-	3.7mm
BB90	89.5	GEN1 MTN DM	1.7mm	-	-	3.7mm
		GEN1 MTN NON-DM	1.7mm	-	-	6.8mm
		GEN2 MTN DM	1.7mm	-	-	6.8mm
		SRAM MTN GxP	1.7mm	-	-	6.8mm
BB92	92	GEN1 MTN DM	1.7mm	-	-	2mm
		GEN1 MTN NON-DM	1.7mm	-	-	3.7mm
		GEN2 MTN DM	1.7mm	-	-	3.7mm
		SRAM MTN GxP	1.7mm	-	-	3.7mm
BB30/PF30	73	GEN1 MTN DM	1.7mm	-	-	2mm
		GEN1 MTN NON-DM	1.7mm	-	-	3.7mm
		GEN2 MTN DM	1.7mm	-	-	3.7mm
		SRAM MTN GxP	1.7mm	-	-	3.7mm