



# M24 BSA

English Threaded BB  
For M24 Road or MTB Cranks  
and SRAM GXP™ Cranksets

## SAFETY INFORMATION - READ BEFORE RIDE

Since specific tools and experience are necessary for proper installation, it is recommended that the product be installed by a qualified bicycle technician.

Read the service instructions of your crank carefully prior to installing the parts. Loose, worn or damaged parts may cause riding problems and serious injury may occur as a result. If installation and adjustments are not carried out correctly, the chain may come off and this may cause you to fall off the bicycle which could result in serious injury. **Read these instructions carefully, and keep them for later use.**

- Ensure that your BSA frame shell is clean and free of any debris.
- Apply **Anti-Seize** to the BB cup threads and frame threads before installing.
- Before riding the bicycle, check that there is no play or looseness in the bottom bracket connection. Also, be sure to retighten the crankvarms and pedals at periodic intervals.
- If you feel any looseness or 'play' in the bearings, the bottom bracket should be inspected/replaced.
- Be sure to read the instructions for your front chainrings/crank in conjunction with these service instructions.
- **Do not wash the bottom bracket with high-pressure jets of water.**
- For maximum performance it is required to remove and periodically inspect/clean your Praxis Works bottom bracket.
- **Parts are not guaranteed against natural wear or deterioration resulting from normal use.**
- For any questions regarding methods of installation, adjustment, maintenance or operation, please contact a professional bicycle dealer or call Praxis Works.
- Praxis Works assumes no responsibility for damages or injury related to improperly installed components.

**READ THE STEP-BY-STEP INSTRUCTIONS THAT ARE PROVIDED ON THE OTHER SIDE.**

## WARRANTY

- Praxis Works Bottom Bracket products are warranted to be free from defects in materials or workmanship for two years after original purchase. The warranty is non-transferable and valid to the original purchaser of the product only.
- Any attempt to modify the product in any way such as drilling, grinding or painting will void the warranty.
- This warranty is not valid for "abused" or neglected products, or products that are damaged by improper installation.
- If a defect is found, our entire liability and your sole remedy shall be, at our option, free repair or replacement of the Praxis product.
- Except as expressly required by law, Praxis Works shall not be held liable for any indirect, special, or consequential damages.

THIS WRITTEN EXPRESS WARRANTY IS IN LIEU OF ALL OTHER WARRANTIES, IMPLIED OR EXPRESSED. This warranty gives you specific legal rights, and you may also have other rights which vary state to state. **For more information on warranty policy and instructions for completing a warranty claim, check out the Full Warranty Policy found at our website. [www.praxis-works.com](http://www.praxis-works.com)**

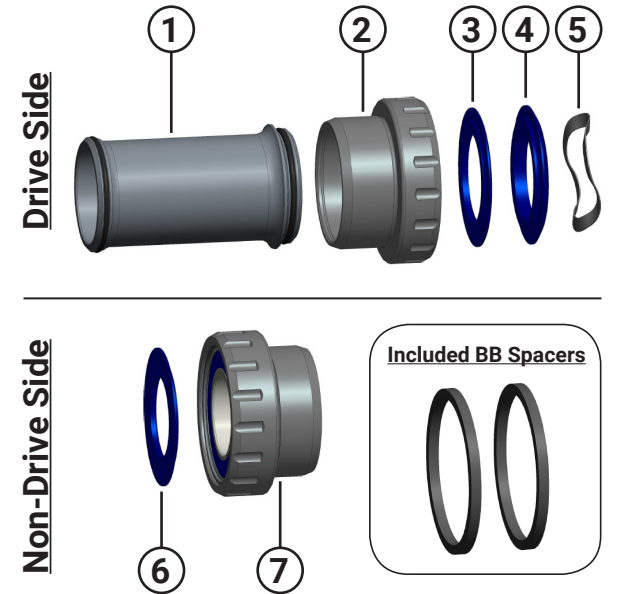
## M24 BSA Compatibility and Spec

CRANKSET	Compatible with ALL Praxis M24 Based Cranks and SRAM GXP™ cranksets
FRAME SHELL	BSA 68mm Road Frames    BSA 68/73mm MTB Frames
FRONT DERAILLEUR	Braze-on, ST Clamp, or Direct Mount    -    E-type only when on 68mm MTB

## REQUIRED TOOLS

- An M24 or GXP BB Tool
- 3/8" Drive Torque Wrench
- Anti-Seize Compound
- Waterproof Grease

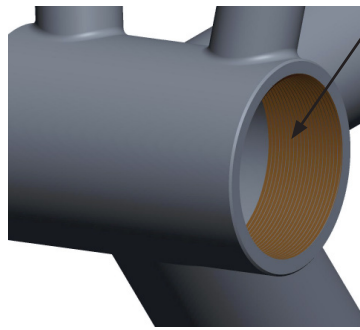
Included Parts		
Number	Part	Qty
1	BSA BB Sleeve	1
2	Drive Side (RH) Cup with 24mm ID Bearing	1
3	24mm ID X 2.0mm Dust Cover	1
4	24mm ID X 3.7mm Dust Cover	1
5	Wave Washer	1
6	22mm ID X 1.7mm Dust Cover	1
7	Non Drive Side (LH) Cup with 22mm ID Bearing	1



Praxis Dust Cover Setup Chart		
Crank Type	Non-Drive Side	Drive Side
Direct Mount MTB	22mm ID / 1.7mm	24mm ID / 2.0mm
Standard MTB		24mm ID / 3.7mm
Standard ROAD		24mm ID / 2.0mm
SRAM™ ROAD	22mm ID / 1.7mm	24mm ID / 2.0mm
SRAM™ MTN		24mm ID / 3.7mm

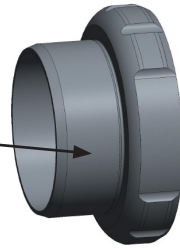
Cup Spacer Setup Chart		
BB Type	Non-Drive Side	Drive Side
68mm Road	None	None
68mm MTB	1X 2.5mm Spacer	1X 2.5mm Spacer
73mm MTB	None	None

## 1. BB PREP



**1** Add grease or anti-seize to the frame threads

**2** Add grease or anti-seize to the BB cup threads



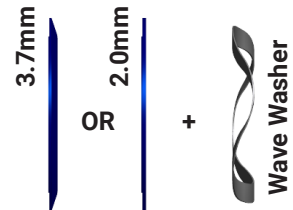
### Cup and Frame Prep

#### BB Dust Cover Prep

Select the correct dust cover for your crank

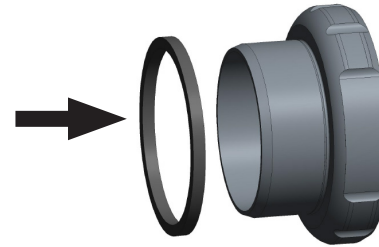
Crank Type	Non-Drive Side	Drive Side
Direct Mount MTB		24mm ID / 2.0mm
Standard MTB	22mm ID / 1.7mm	24mm ID / 3.7mm
Standard ROAD		24mm ID / 2.0mm
SRAM™ ROAD	22mm ID / 1.7mm	24mm ID / 2.0mm
SRAM™ MTN		24mm ID / 3.7mm

#### Drive Side Dust Covers



### Cup Spacer Setup

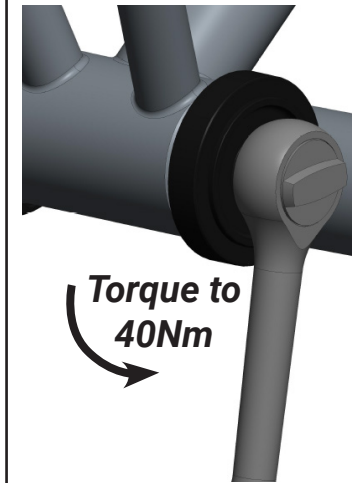
Add Cup Spacers if necessary (see chart below for setup details)



#### Cup Spacer Setup Chart

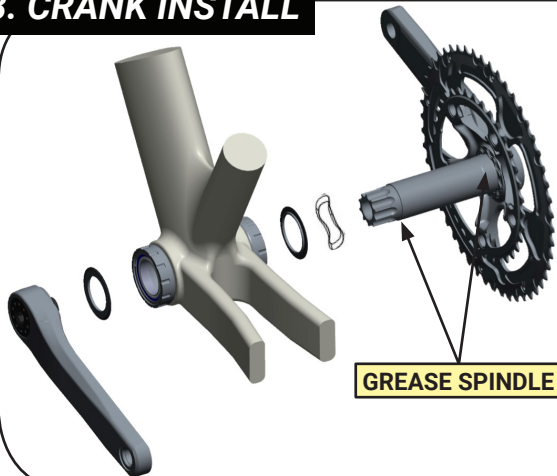
BB Type	Non-Drive Side	Drive Side
68mm Road	None	None
68mm MTB	1X 2.5mm Spacer	1X 2.5mm Spacer
73mm MTB	None	None

## 2. BB INSTALL



- For installation, note the directional arrows on the cups
- Thread the Right-hand cup into the Right-hand (Drive) side of the frame
- Thread the Left-hand cup into the Left-hand (Non-drive) side of the frame
- Tighten each cup to 40Nm of torque

## 3. CRANK INSTALL

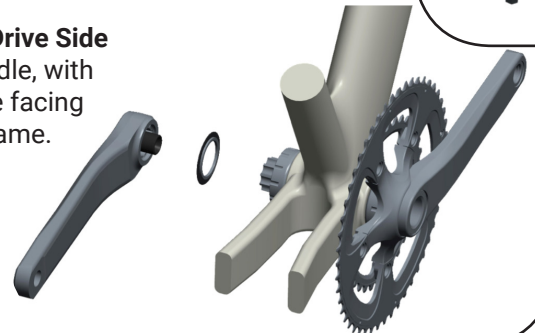


**1** Slide the Drive Side 24mm ID Wave Washer onto the spindle.

Next slide on the 24mm ID Drive Side Dust Cover with the Praxis wordmark facing out/away from the frame.

Now grease the spindle and insert the crankset into the Drive cup and push spindle through bottom bracket.

**2** Slide the 22mm ID Non-Drive Side Dust Cover onto the spindle, with the Praxis wordmark side facing out and away from the frame.



**3** Use an 8mm hex torque wrench and tighten the Non-Drive crank arm bolt to 48-55Nm.

Spin crank to make sure it moves freely.

Your installation is now complete.

**Torque to 48-55Nm**